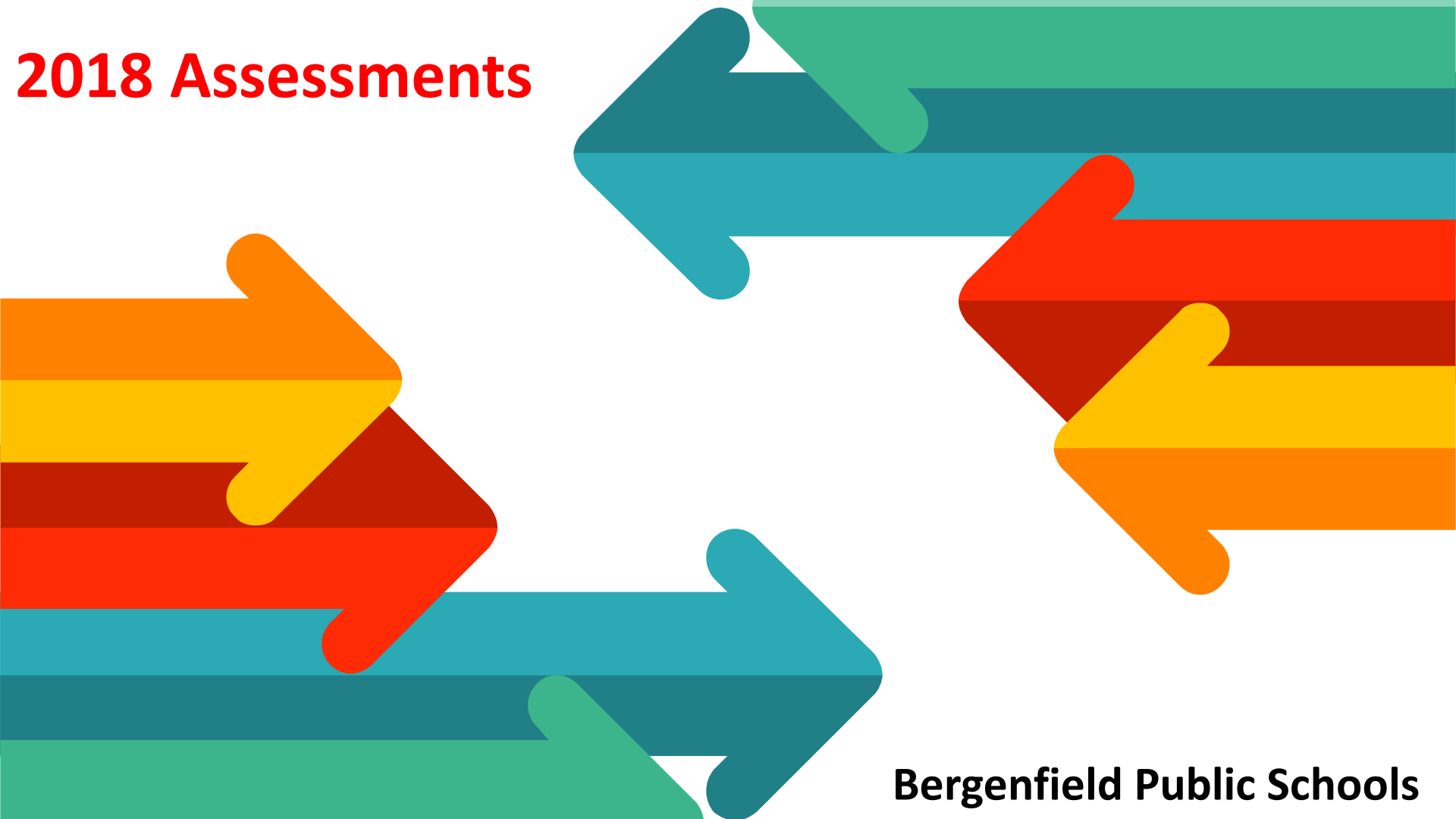


# 2018 Assessments



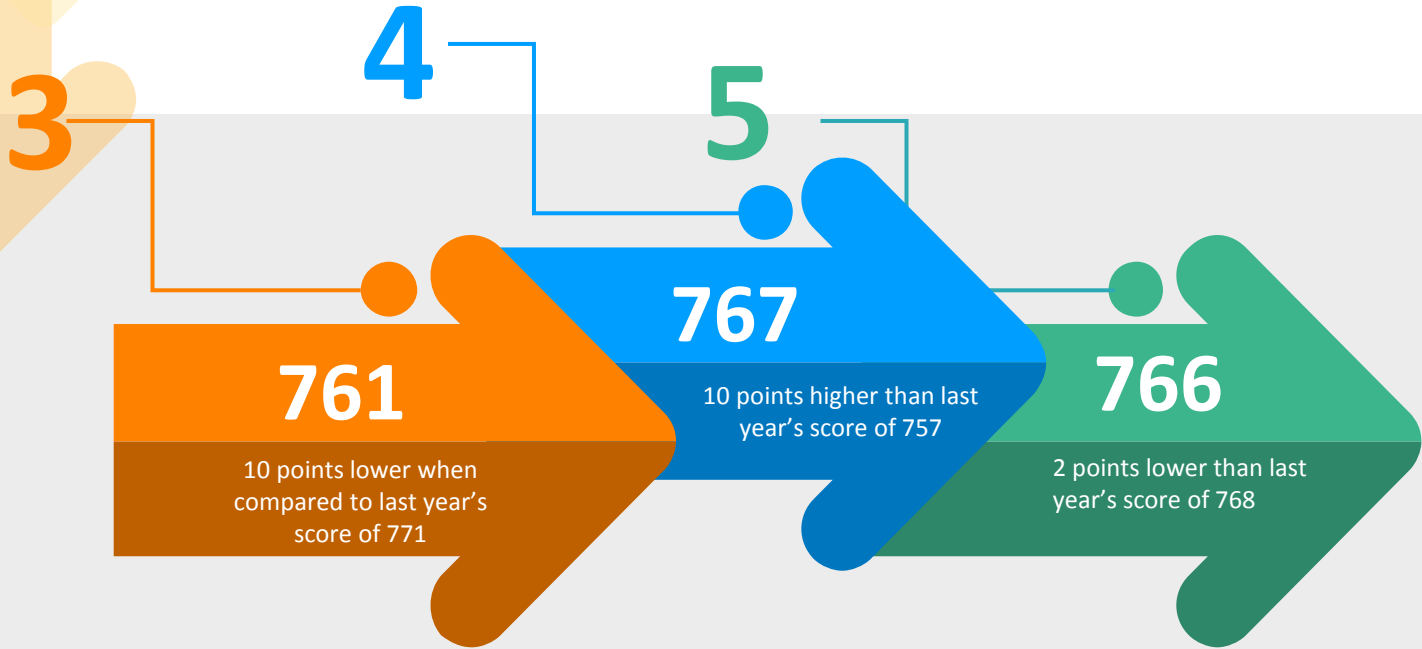
**Bergenfield Public Schools**

# PARCC Performance Levels

<b>1</b>	Did Not Yet Meet (650-699)
<b>2</b>	Partially Met (700-724)
<b>3</b>	Approached (725-749)
<b>4</b>	Met (varies according to test)
<b>5</b>	Exceeded (varies according to test)

# ELA

## District's Scores by Grade



# 3<sup>rd</sup> ELA Performance %

Performance	# of Students	Mean Score	Not yet Meeting 1	Partially Meeting 2	Approaching 3	Meeting 4	Exceeding 5	% >= Level 4
Cross-State	333,398	739	20	17	23	36	5	41
State	98,314	750	13	13	21	44	8	52
<b>District</b>	<b>265</b>	<b>761</b>	<b>10</b>	<b>7</b>	<b>17</b>	<b>55</b>	<b>11</b>	<b>66</b>
Franklin Elementary	75	755	9	7	28	48	8	56
Hoover Elementary	40	732	20	20	20	40	0	40
Jefferson Elementary	52	771	2	2	13	77	6	83
Lincoln Elementary	44	775	11	2	7	61	18	79
Washington Elementary	54	770	9	7	13	50	20	70

# 4th ELA Performance %

Performance	# of Students	Mean Score	Not yet Meeting 1	Partially Meeting 2	Approaching 3	Meeting 4	Exceeding 5	% >= Level 4
Cross-State	345,891	744	13	18	25	33	11	44
State	99,447	753	8	12	22	39	19	58
<b>District</b>	<b>239</b>	<b>767</b>	<b>3</b>	<b>8</b>	<b>16</b>	<b>46</b>	<b>26</b>	<b>72</b>
Franklin Elementary	63	771	0	10	16	41	33	74
Hoover Elementary	42	765	5	14	12	36	33	69
Jefferson Elementary	38	772	3	5	11	50	32	82
Lincoln Elementary	46	764	4	4	22	50	20	70
Washington Elementary	50	762	4	8	18	56	14	70

# 5th ELA Performance %

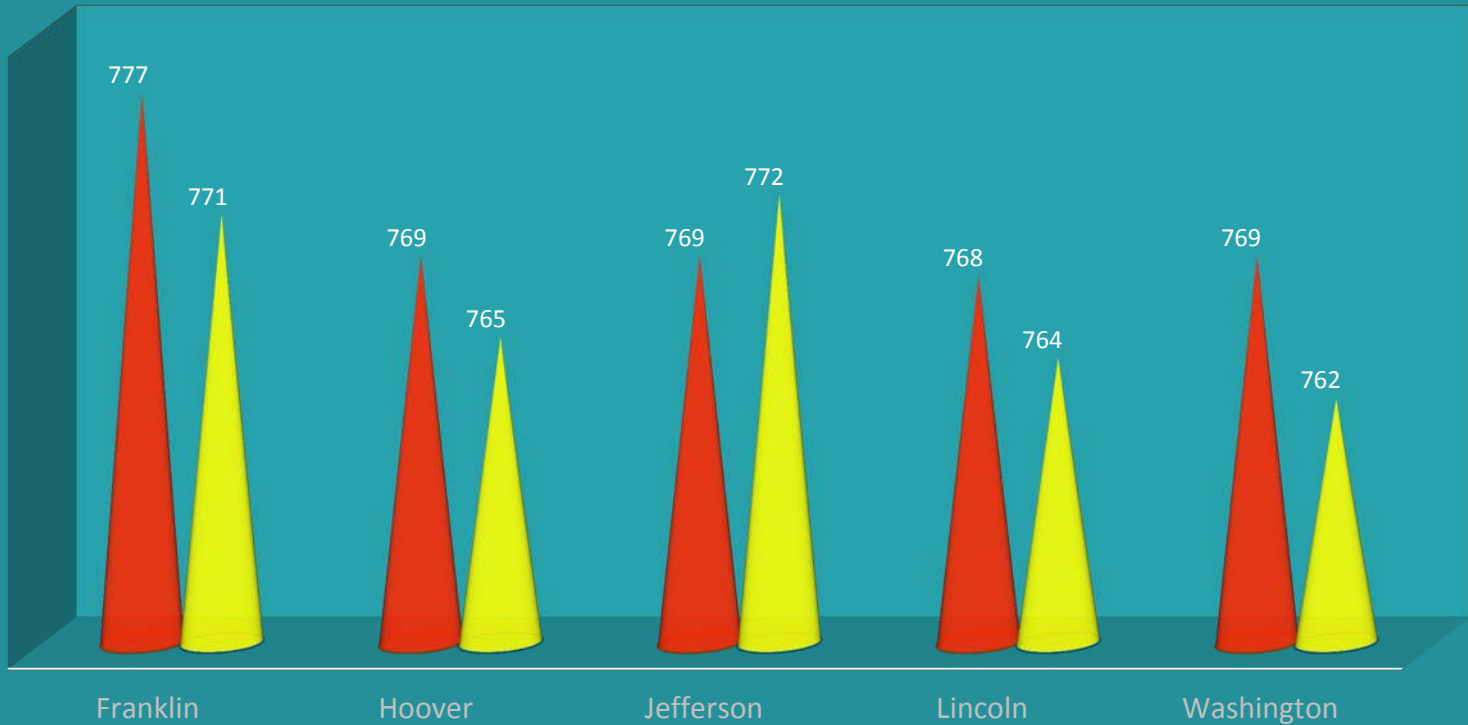
Performance	# of Students	Mean Score	Not yet Meeting 1	Partially Meeting 2	Approaching 3	Meeting 4	Exceeding 5	% >= Level 4
Cross-State	349,130	742	12	19	26	38	5	43
State	101,065	755	7	13	22	47	11	58
<b>District</b>	<b>255</b>	<b>766</b>	<b>7</b>	<b>7</b>	<b>13</b>	<b>58</b>	<b>15</b>	<b>73</b>
Franklin Elementary	52	768	10	6	12	54	19	73
Hoover Elementary	45	750	13	13	18	42	13	55
Jefferson Elementary	41	763	2	5	20	63	10	73
Lincoln Elementary	52	776	4	2	8	73	13	86
Washington Elementary	65	768	6	9	11	55	18	73

# ELA Cohort Performance by School

## Current 5<sup>th</sup> Graders

### Class of 2026

■ 2017 3rd Grade ■ 2018 4th Grade

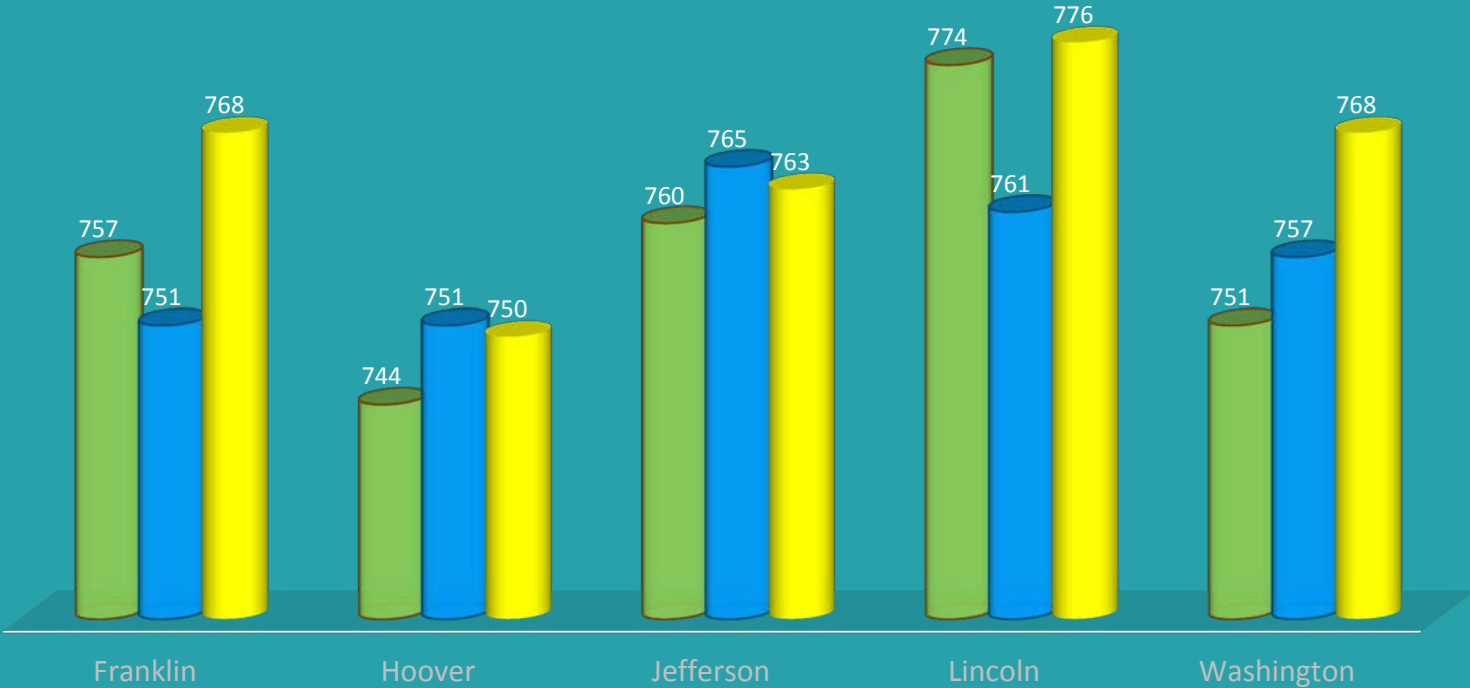


# ELA Cohort Performance by School

## Current 6<sup>th</sup> Graders

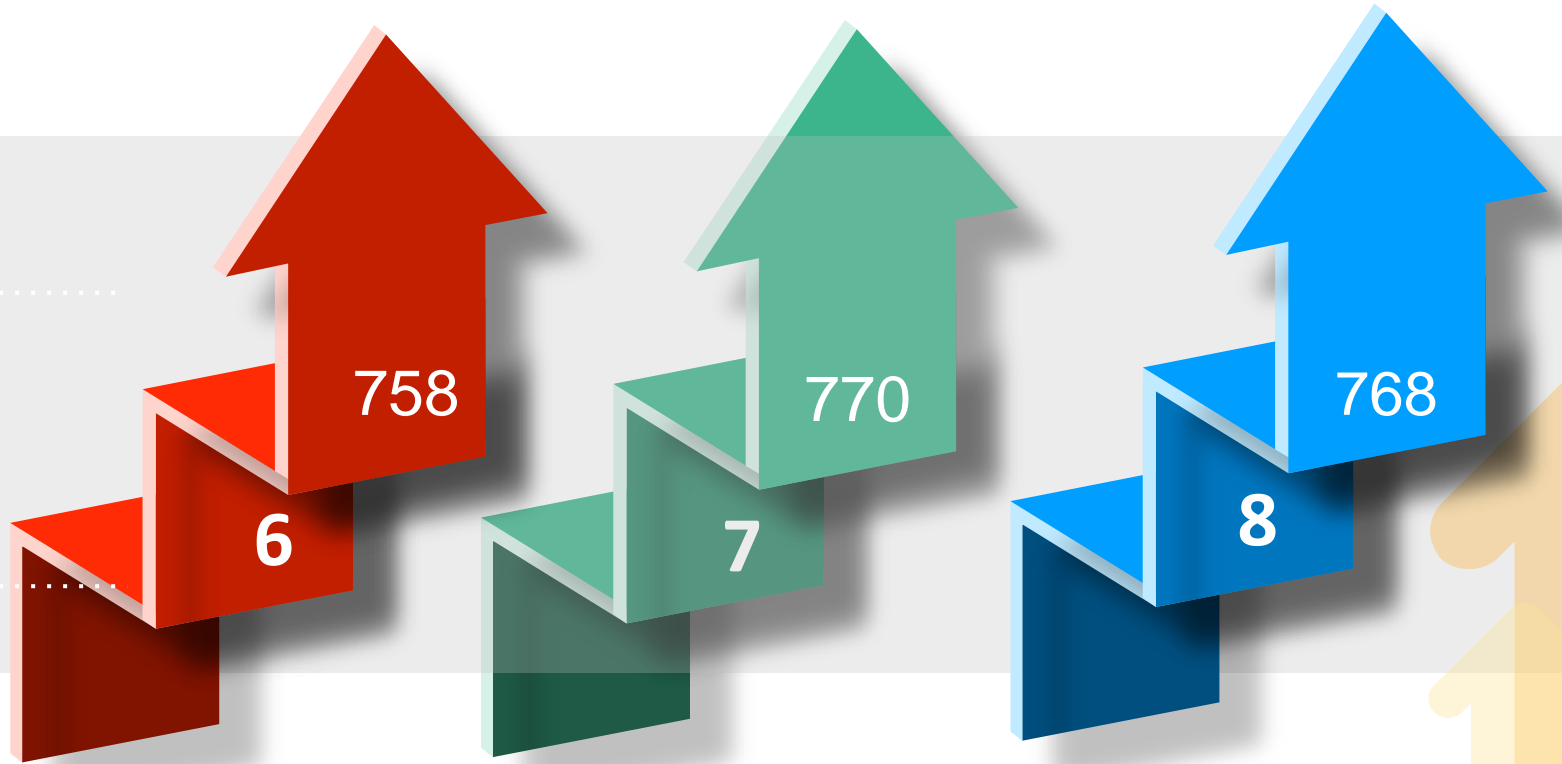
### Class of 2025

■ 2016 (3rd) ■ 2017 (4th) ■ 2018 (5th)





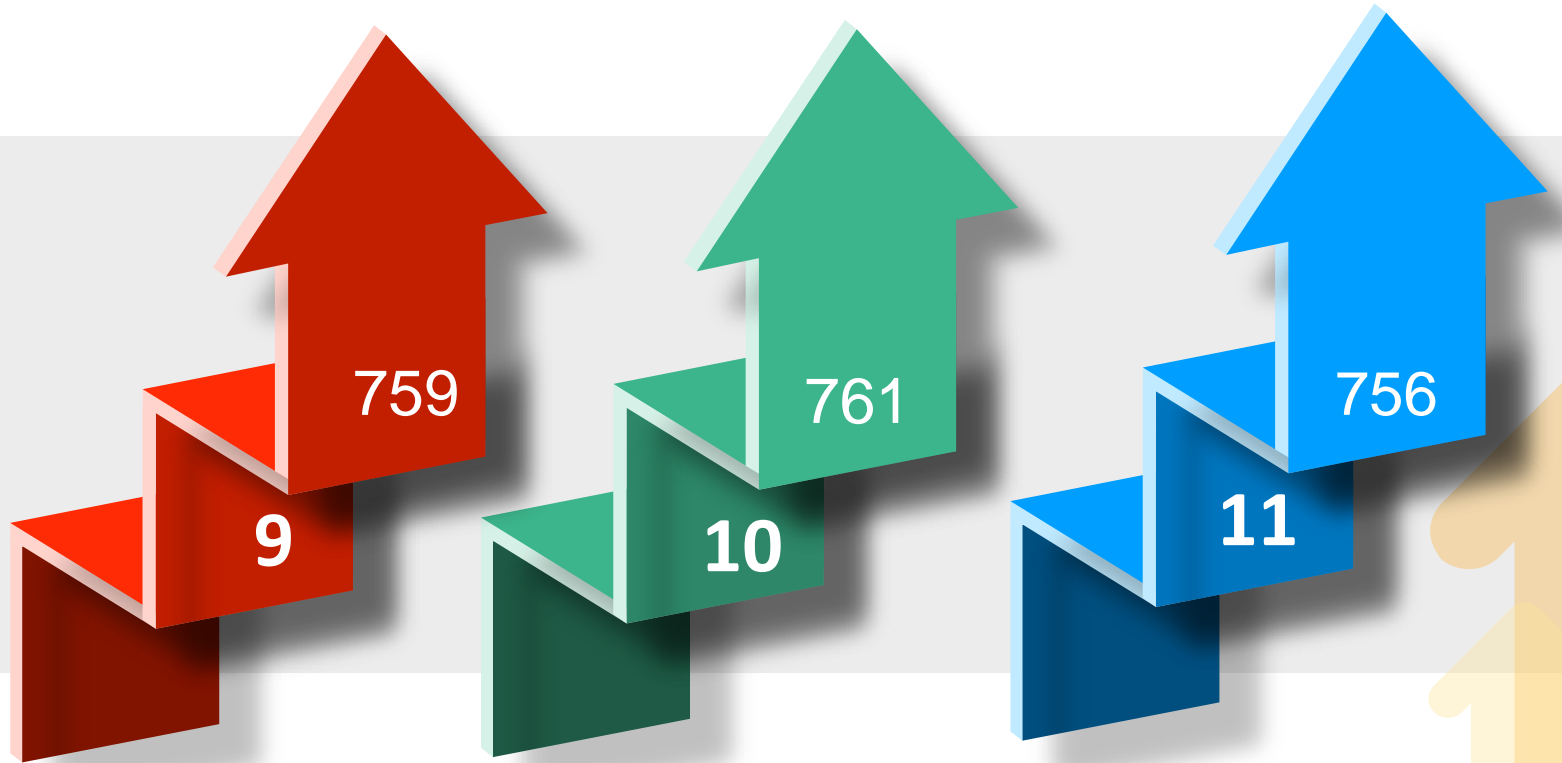
# *Middle School ELA Performance*



## RWB ELA Performance %

Performance	# of Students	Mean Score	Not yet Meeting 1	Partially Meeting 2	Approaching 3	Meeting 4	Exceeding 5	% >= Level 4
Cross-State (6)	345,435	742	11	20	28	33	6	41
State (6)	99,421	754	6	14	24	41	15	56
<b>District (6)</b>	<b>273</b>	<b>758</b>	<b>5</b>	<b>9</b>	<b>28</b>	<b>39</b>	<b>19</b>	<b>58</b>
Cross-State (7)	339,954	745	14	16	23	30	16	46
State (7)	98,295	760	9	10	18	34	9	43
<b>District (7)</b>	<b>258</b>	<b>770</b>	<b>6</b>	<b>6</b>	<b>11</b>	<b>41</b>	<b>35</b>	<b>76</b>
Cross-State (8)	340,522	743	16	17	24	33	11	44
State (8)	100,150	759	9	11	20	40	20	60
<b>District (8)</b>	<b>282</b>	<b>768</b>	<b>6</b>	<b>5</b>	<b>17</b>	<b>47</b>	<b>24</b>	<b>71</b>

# High School ELA Performance



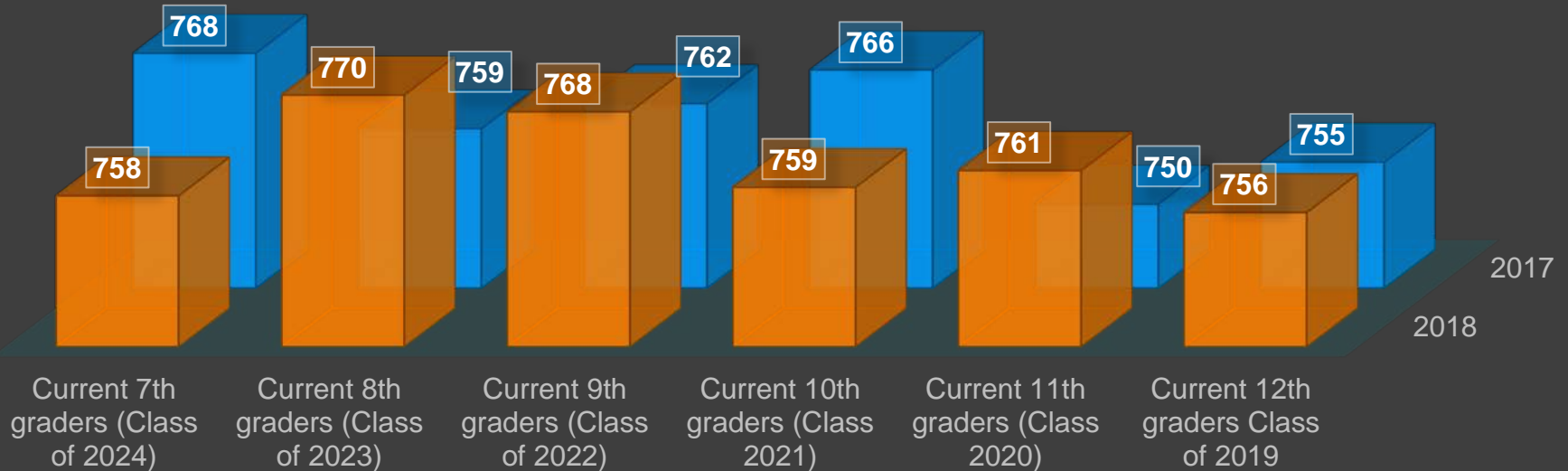
## BHS ELA Performance %

Performance	# of Students	Mean Score	Not yet Meeting 1	Partially Meeting 2	Approaching 3	Meeting 4	Exceeding 5	% >= Level 4
Cross-State (9)	129,057	746	14	15	23	35	13	48
State (9)	99,370	751	12	13	21	38	16	54
<b>District (9)</b>	<b>273</b>	<b>759</b>	<b>10</b>	<b>8</b>	<b>20</b>	<b>40</b>	<b>22</b>	<b>62</b>
Cross-State (10)	190,651	744	20	14	19	31	16	47
State (10)	95,296	748	18	13	19	32	18	50
<b>District (10)</b>	<b>294</b>	<b>761</b>	<b>11</b>	<b>9</b>	<b>16</b>	<b>40</b>	<b>24</b>	<b>64</b>
Cross-State (11)	104,429	736	21	17	23	31	8	39
State (11)	69,346	735	23	17	22	29	9	38
<b>District (11)</b>	<b>268</b>	<b>756</b>	<b>10</b>	<b>10</b>	<b>21</b>	<b>40</b>	<b>20</b>	<b>60</b>

# ELA Cohort Performance MS/HS

CLASS OF 2019 TO CLASS OF 2024

2018 2017



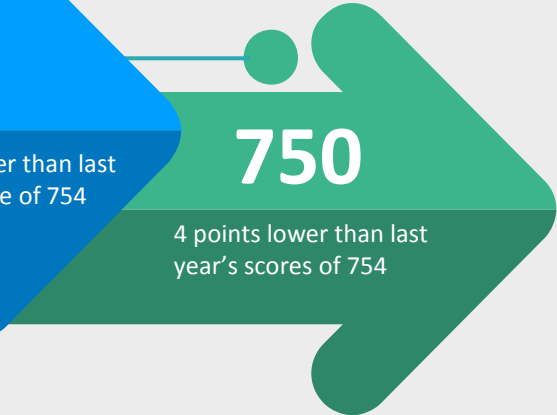
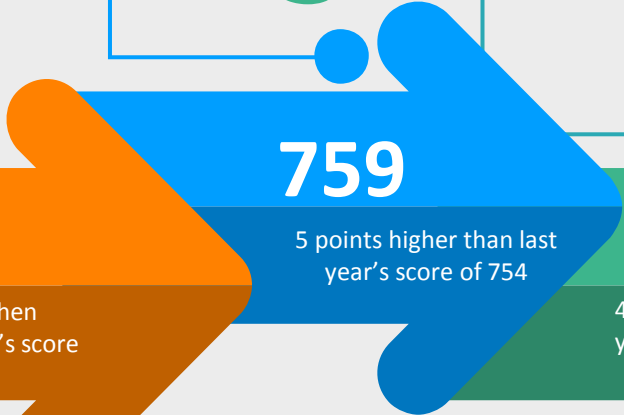
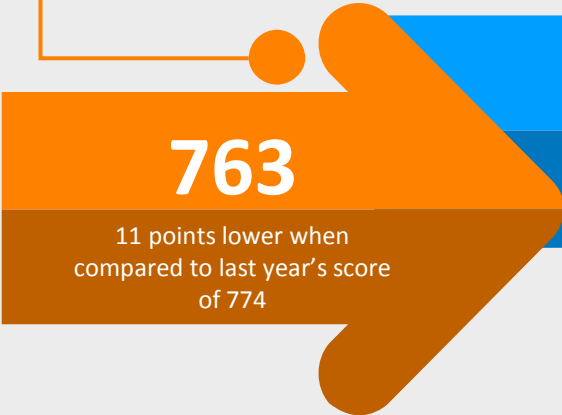
# MATH

## District's Scores by Grade

3

4

5



# 3<sup>rd</sup> Math Performance %

Performance	# of Students	Mean Score	Not yet Meeting 1	Partially Meeting 2	Approaching 3	Meeting 4	Exceeding 5	% >= Level 4
Cross-State	348,690	742	13	20	25	32	11	43
State	99,262	752	8	15	24	38	15	53
<b>District</b>	<b>270</b>	<b>763</b>	<b>7</b>	<b>7</b>	<b>19</b>	<b>43</b>	<b>24</b>	<b>67</b>
Franklin Elementary	75	760	3	7	20	56	15	71
Hoover Elementary	42	743	14	10	33	36	7	43
Jefferson Elementary	53	759	4	11	17	49	19	68
Lincoln Elementary	45	783	7	4	11	22	56	78
Washington Elementary	55	768	9	4	15	42	31	73

# 4th Math Performance %

Performance	# of Students	Mean Score	Not yet Meeting	Partially Meeting	Approaching	Meeting	Exceeding	% >= Level 4
			1	2	3	4	5	
Cross-State	354,653	738	13	22	27	33	5	38
State	100,378	748	8	17	26	42	6	50
<b>District</b>	<b>246</b>	<b>759</b>	<b>2</b>	<b>8</b>	<b>22</b>	<b>57</b>	<b>10</b>	<b>67</b>
Franklin Elementary	63	764	2	5	19	62	13	75
Hoover Elementary	47	755	4	15	21	51	9	60
Jefferson Elementary	38	755	3	5	29	58	5	63
Lincoln Elementary	46	757	2	4	33	52	9	61
Washington Elementary	52	759	2	12	13	62	12	74



# 5th Math Performance %

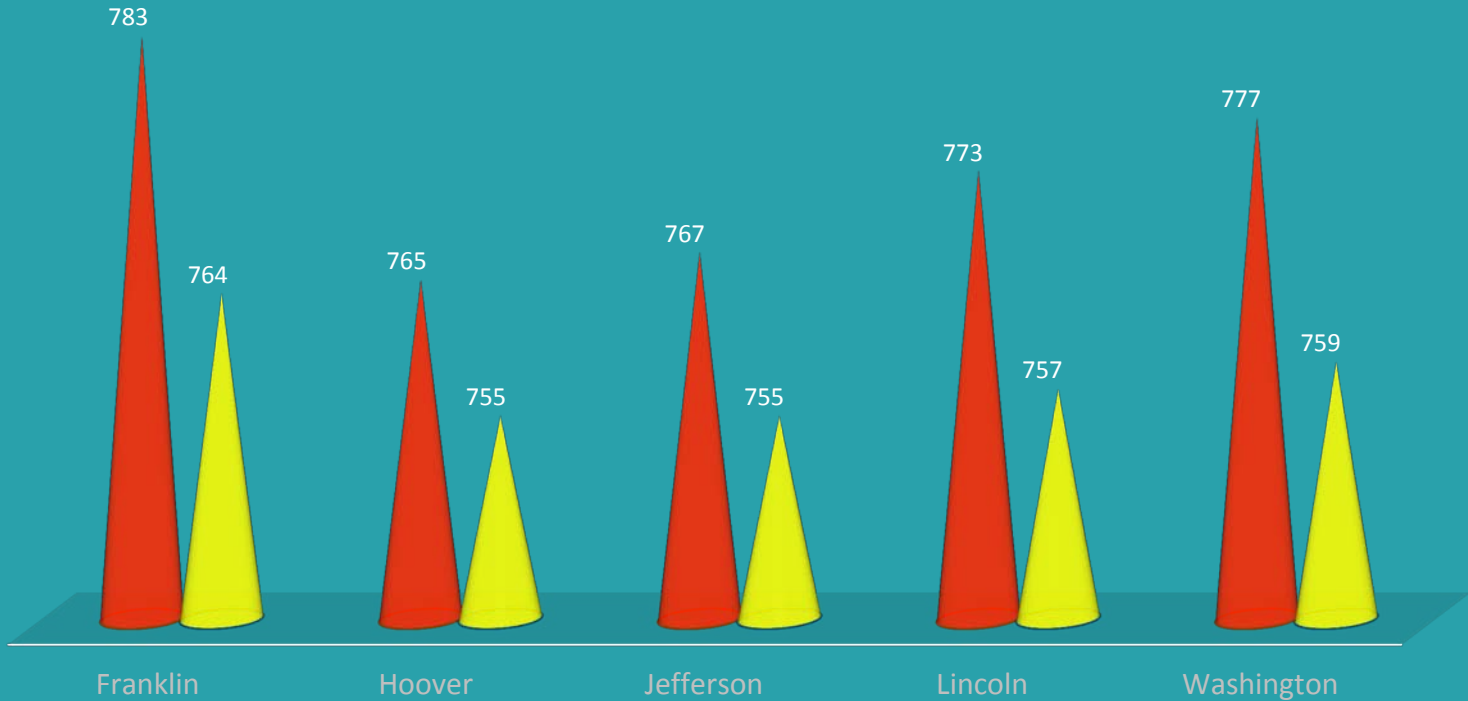
Performance	# of Students	Mean Score	Not yet Meeting 1	Partially Meeting 2	Approaching 3	Meeting 4	Exceeding 5	% >= Level 4
Cross-State	356,669	738	14	22	27	31	7	38
State	101,703	748	7	17	27	38	10	48
<b>District</b>	<b>261</b>	<b>750</b>	<b>10</b>	<b>13</b>	<b>25</b>	<b>40</b>	<b>12</b>	<b>52</b>
Franklin Elementary	53	745	13	15	25	38	9	47
Hoover Elementary	48	735	21	33	17	31	8	39
Jefferson Elementary	42	761	5	5	31	38	21	59
Lincoln Elementary	53	752	2	9	34	49	6	55
Washington Elementary	65	758	8	11	22	43	17	60

# Math Cohort Performance by School

## Current 5<sup>th</sup> Graders

### Class of 2026

■ 2017 3rd Grade ■ 2018 4th Grade

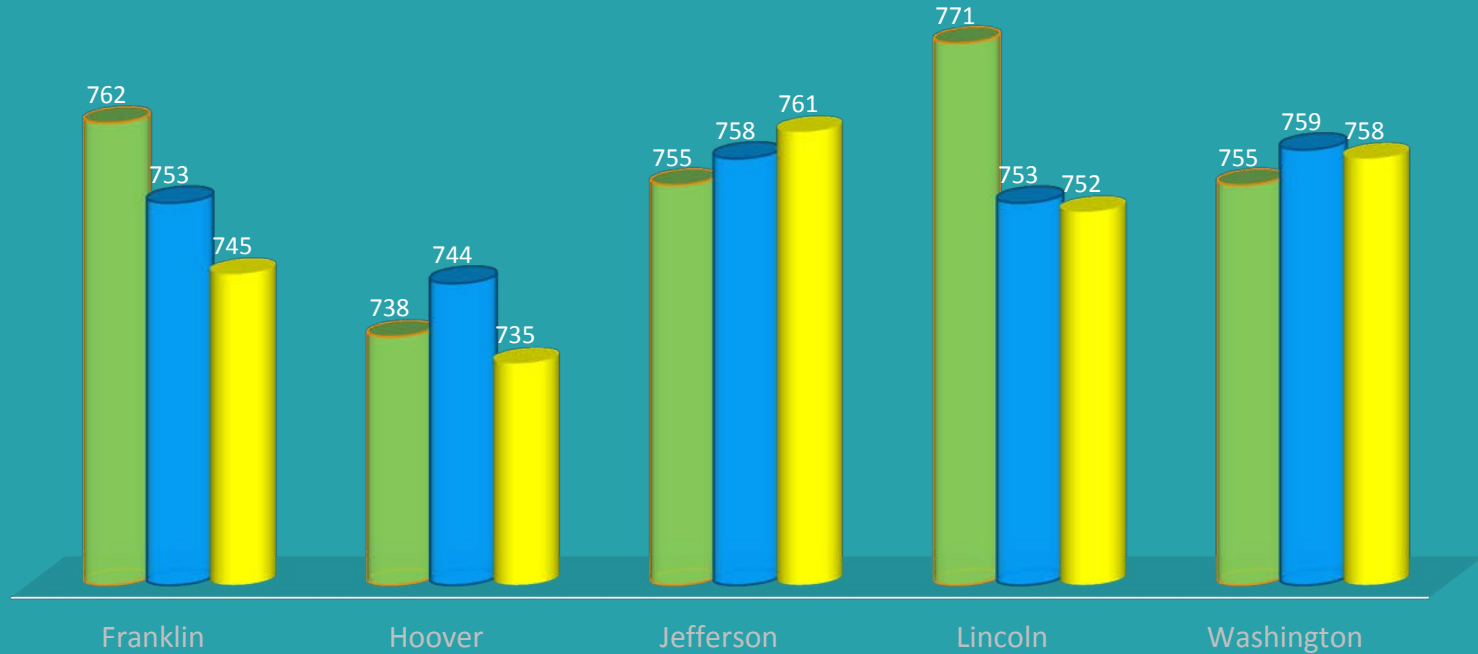


# Math Cohort Performance by School

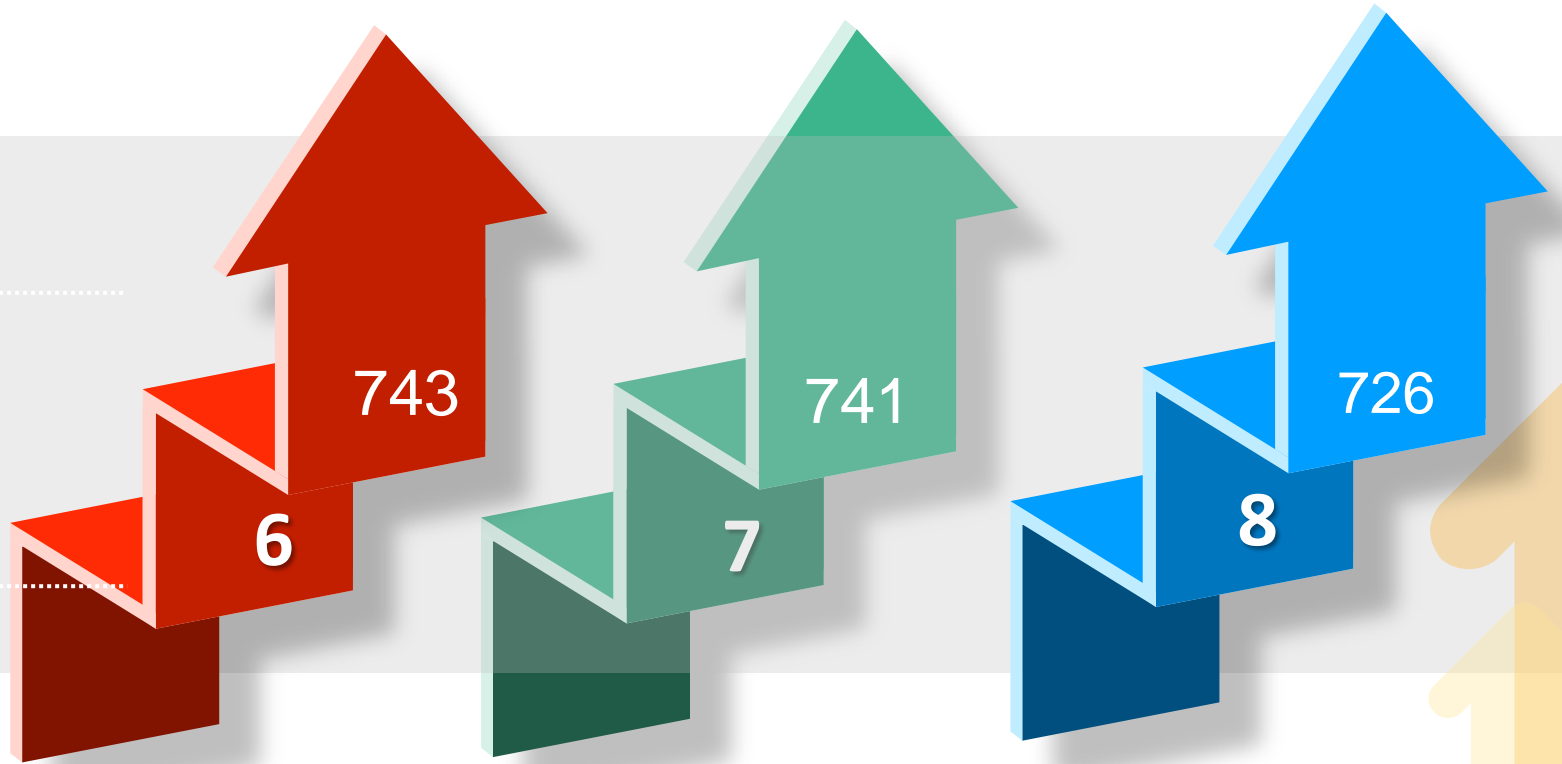
## Current 6<sup>th</sup> Graders

### Class of 2025

2016 (3rd) 2017 (4th) 2018 (5th)



# *Middle School Math Performance*



## RWB Math Performance %

Performance	# of Students	Mean Score	Not yet Meeting 1	Partially Meeting 2	Approaching 3	Meeting 4	Exceeding 5	% >= Level 4
Cross-State (6)	346,888	734	14	26	28	27	5	32
State (6)	100,174	744	8	20	28	36	9	44
<b>District (6)</b>	<b>276</b>	<b>743</b>	<b>8</b>	<b>17</b>	<b>35</b>	<b>35</b>	<b>6</b>	<b>41</b>
Cross-State (7)	324,982	736	11	26	30	29	4	33
State (7)	94,938	743	8	20	29	36	7	43
<b>District (7)</b>	<b>217</b>	<b>741</b>	<b>6</b>	<b>16</b>	<b>37</b>	<b>41</b>	<b>1</b>	<b>42</b>
Cross-State (8)	265,249	725	27	24	24	23	3	26
State (8)	64,462	728	22	23	27	27	1	28
<b>District (8)</b>	<b>180</b>	<b>726</b>	<b>20</b>	<b>24</b>	<b>36</b>	<b>19</b>	<b>1</b>	<b>20</b>

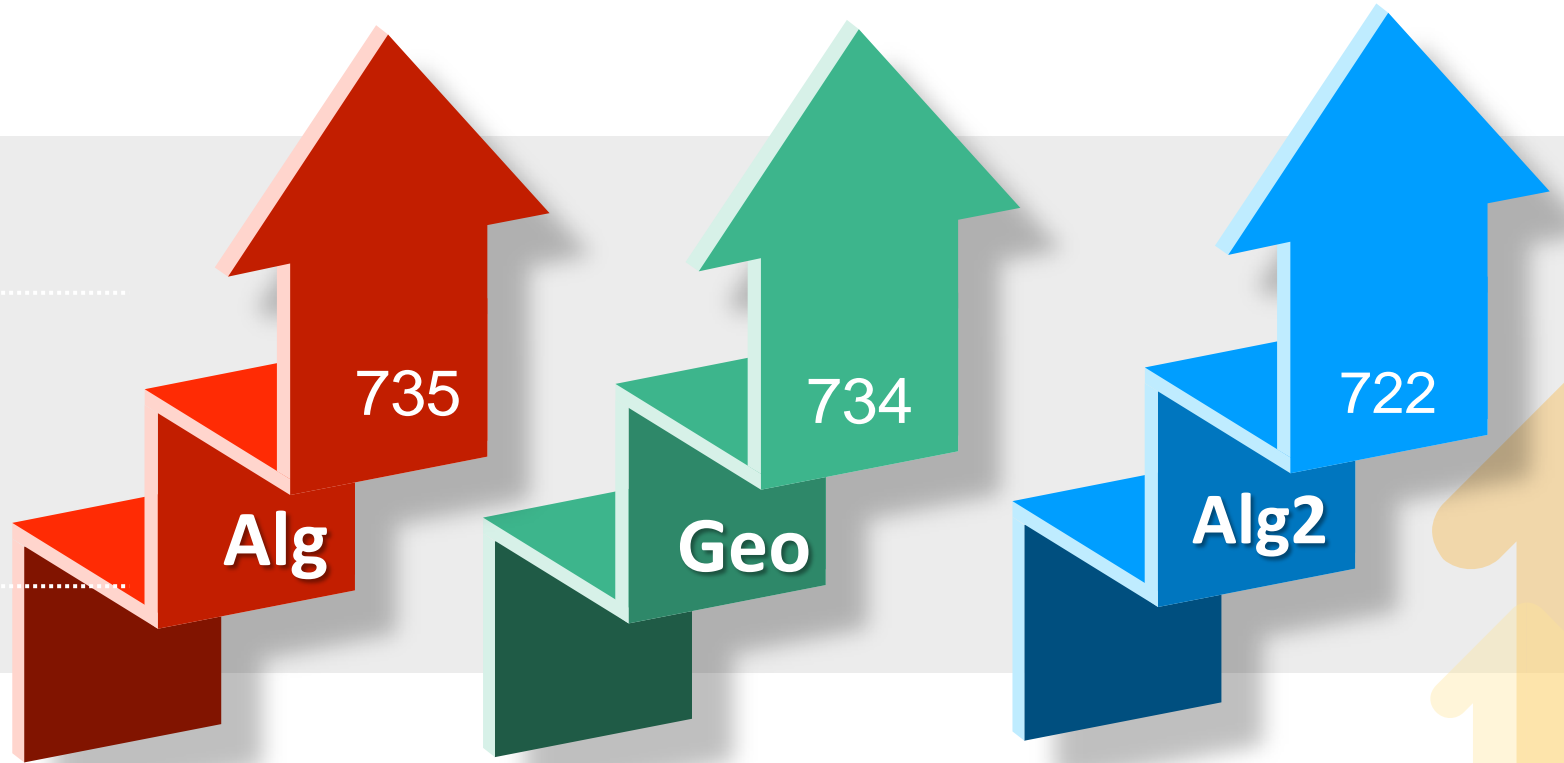
# Middle School Math Performance



- 125 students at RWB took the Alg01 assessment. 97% met or exceeded expectation.
- 23 students took the Geometry. 92% met or exceeded expectation.



# High School Math Performance



## BHS Math Performance %

Performance	# of Students	Mean Score	Not yet Meeting 1	Partially Meeting 2	Approaching 3	Meeting 4	Exceeding 5	% >= Level 4
Cross-State (Alg01)	223,497	741	14	22	25	34	5	39
State (Alg01)	110,972	746	11	19	24	39	6	45
<b>BHS (Alg01)</b>	<b>202</b>	<b>735</b>	<b>13</b>	<b>25</b>	<b>31</b>	<b>31</b>	<b>0</b>	<b>31</b>
Cross-State (Geo)	131,696	734	10	33	29	24	5	29
State (Geo)	90,159	734	9	31	30	25	5	30
<b>BHS (Geo)</b>	<b>237</b>	<b>734</b>	<b>6</b>	<b>27</b>	<b>36</b>	<b>30</b>	<b>0</b>	<b>30</b>
Cross-State (Alg2)	125,419	724	31	24	19	23	3	26
State (Alg2)	78,508	725	31	22	18	25	4	29
<b>BHS (Alg2)</b>	<b>265</b>	<b>722</b>	<b>27</b>	<b>24</b>	<b>25</b>	<b>23</b>	<b>1</b>	<b>24</b>

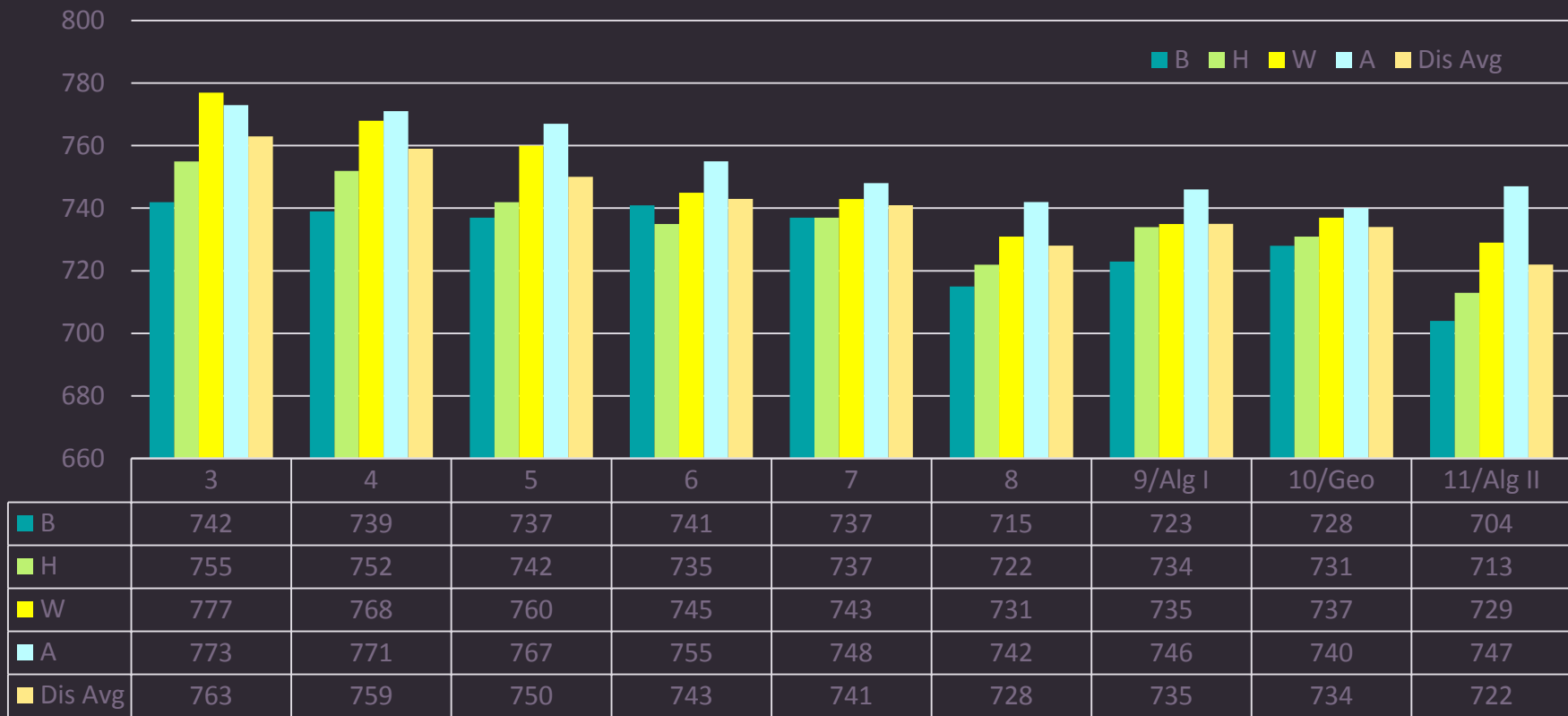


# ELA Demographics-Performance

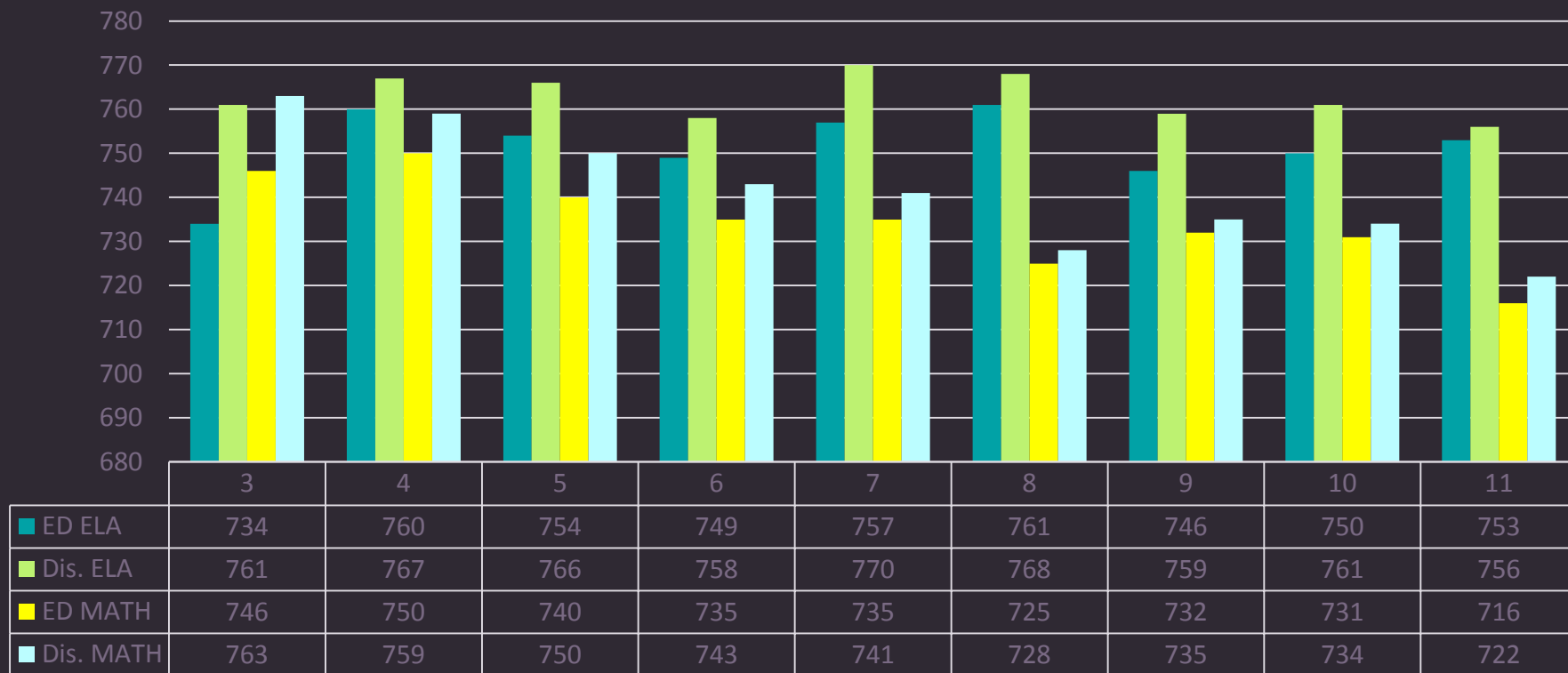


■ B ■ H ■ W ■ A ■ Dis Avg

# Math Demographics-Performance

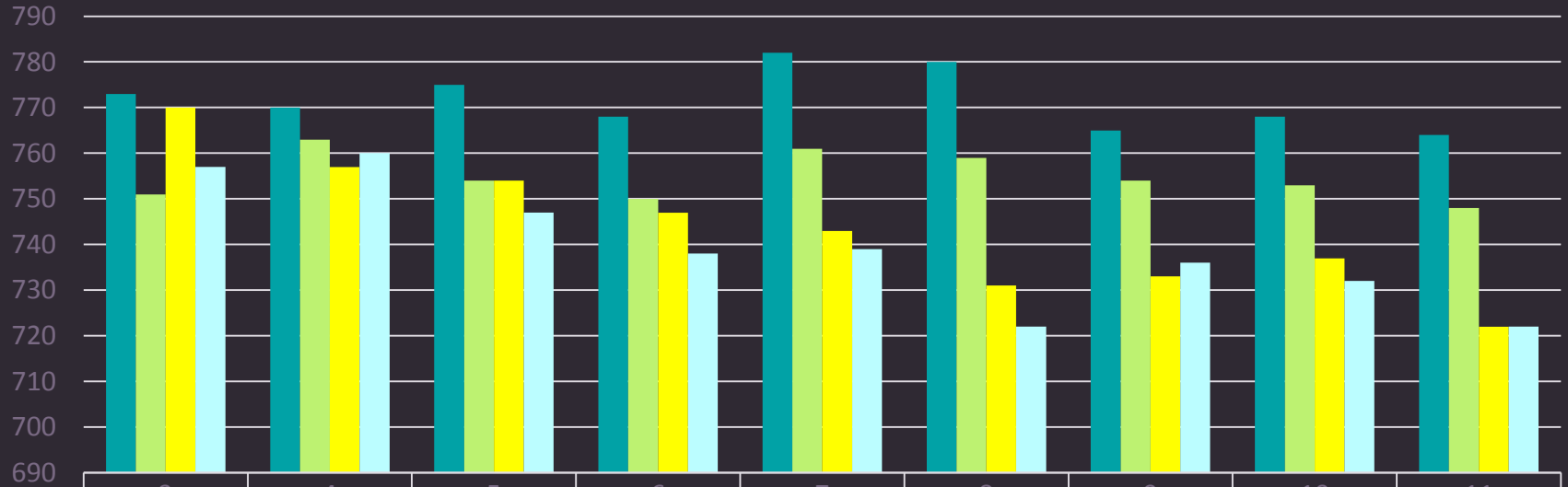


# Socioeconomic Status



ED ELA Dis. ELA ED MATH Dis. MATH

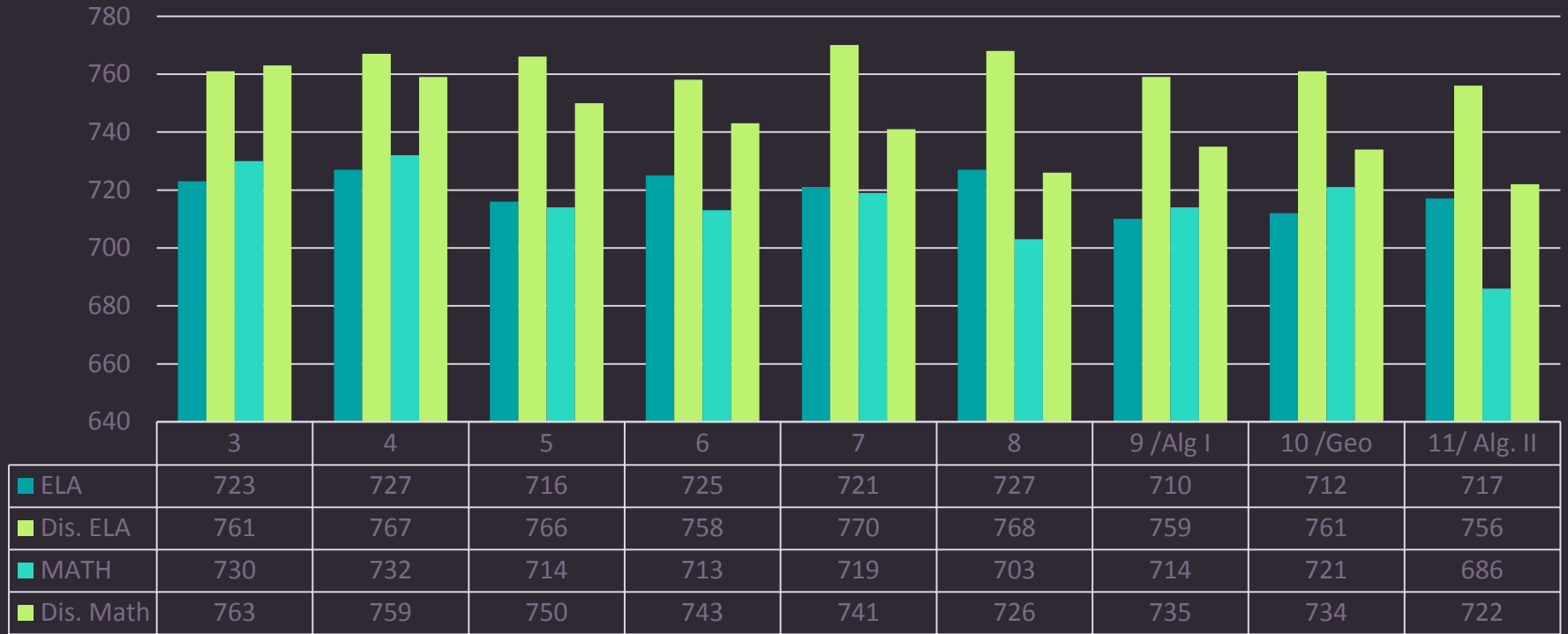
# Gender-Performance



	3	4	5	6	7	8	9	10	11
■ ELA F	773	770	775	768	782	780	765	768	764
■ ELA M	751	763	754	750	761	759	754	753	748
■ MATH F	770	757	754	747	743	731	733	737	722
■ MATH M	757	760	747	738	739	722	736	732	722

■ ELA F ■ ELA M ■ MATH F ■ MATH M

# IDEA-Performance Comparison



■ ELA ■ Dis. ELA ■ MATH ■ Dis. Math

# ELL-Performance Comparison



■ ELA ■ Dis. ELA ■ MATH ■ Dis. MATH

# Elementary ACCESS 2.0 Results

Proficiency Level	K	1	2	3	4	5	Total #
1-Entering	12	0	1	2	0	3	18
2-Emerging	5	2	3	6	4	2	22
3-Developing	15	17	11	11	5	2	61
4-Expanding	5	10	8	9	8	4	44
5-Bridging	1	1	1	1	0	0	4
6-Reaching	0	0	0	0	0	0	0
Total	38	30	24	29	17	11	149

# Secondary ACCESS 2.0 Results

<b>Proficiency Level</b>	<b>6</b>	<b>7</b>	<b>8</b>	<b>9</b>	<b>10</b>	<b>11</b>	<b>12</b>	<b>Total #</b>
1-Entering	0	2	1	1	1	0	0	5
2-Emerging	4	2	3	3	3	1	1	17
3-Developing	10	2	4	6	9	3	3	37
4-Expanding	0	5	6	4	5	3	0	23
5-Bridging	0	2	0	1	1	1	0	5
6-Reaching	0	0	0	0	0	0	0	0
<b>Total</b>	<b>14</b>	<b>13</b>	<b>14</b>	<b>15</b>	<b>19</b>	<b>8</b>	<b>4</b>	<b>87</b>

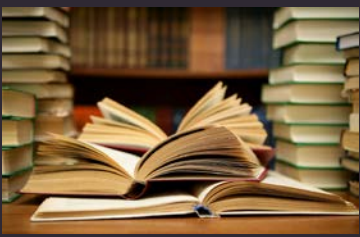


# 2018 NJSLA-S

These scores have not yet been released to the school district, but  
will be reported on upon receipt



# ELA: Findings and Fixes



-- In grades 3 - 11, Bergenfield students had a higher average score as well as a higher percentage of students meeting/exceeding expectation as compared to state and cross-state cohorts.

-- Every grade level had an average district score that was above the 750 target for meeting expectation.

-- The subgroups of ELLs, Special Education, and economically disadvantaged students, on average, scored below the district mean score

-- In general, the average score for females was higher than that for males; the average score for White and Asian students was consistently higher than other ethnicities represented

-- Continue balanced literacy and Basic Skills programs

-- Offer extended day programs for general education, ELLs, and special education students

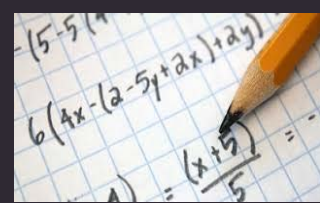
-- Provide professional development dedicated to differentiating instruction for ALL students

- SIOP (ELLs)
- Special Education
- Data-driven Individualized Learning Plans
- Using Technology to Differentiate
- Differentiating for the Advanced Learner

\*The PD opportunities listed above will also be used to address some of the findings in mathematics

# Math: Findings and Fixes

$$\begin{aligned} &= \frac{\sum_{x_1} f_1(x_1) f_2(x_2, x_1)}{\sum_{x_1} \sum_{x_3} f_1(x_1) f_2(x_2, x_1)} \\ &= \frac{\sum_{x_1} f_1(x_1) f_2(x_2, x_1)}{1(x_1) f_2(x_2, x_1)} \end{aligned}$$



- Elementary students had a higher average score as well as a higher percentage of students meeting/exceeding expectation as compared to state and cross-state cohorts
- Students in math 6-8, as well as high school Algebra I and Algebra II scored below state average and had smaller percentage of students meeting/exceeding the standards.
- The subgroups of ELLs, special education, and economically disadvantaged students on average scored below the district mean score.
- In general, the average score for females was higher than that for males, with the exception of Algebra I; the average score for White and Asian students was consistently higher than other ethnicities represented

- Continue Everyday Math [EM] at the elementary level, as well as Accelerated Math and Basic Skills programs
- Transition elementary special education students to EM program
- Offer extended day opportunities, including Algebra I remediation, for general education, ELL and special education students
- Create data teams to identify trends for areas of struggle, audit corresponding curriculum for alignment and frequency, and analyze student progress in all corresponding math tracks
- Review middle school math series and research potential options
- Provide professional development for math, including coaching/modeling, Conquer Math workshops, SIOP training, and other applicable programs

Any Questions?

